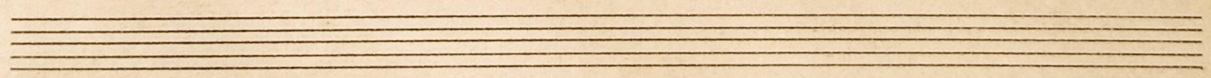
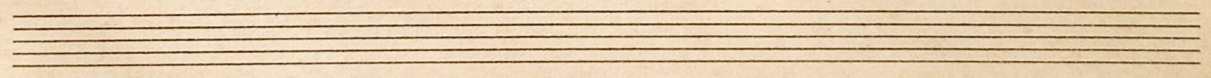
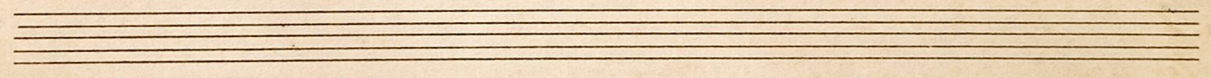
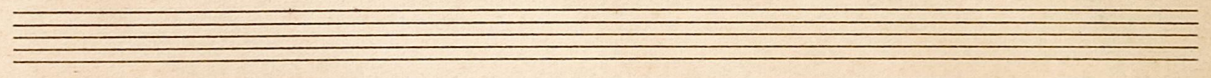
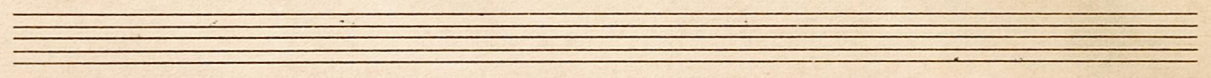
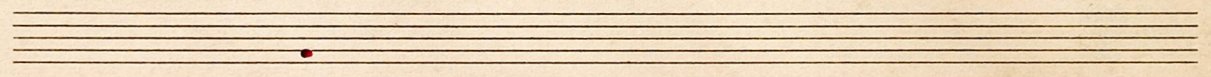
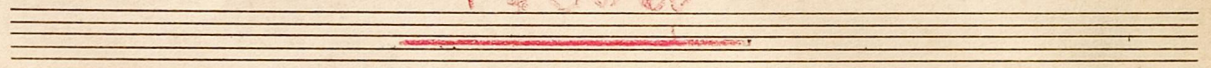



Viola



mf **Viola** = Letra de Carlos Góes. Música de Custódia Fernandes Góes

" *mf* **Hino a São Francisco** "

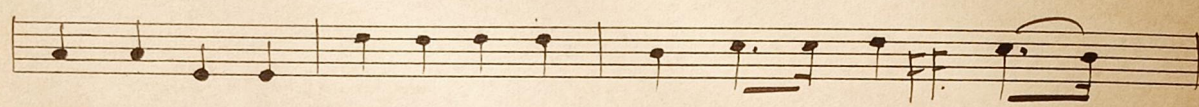
Marcia 

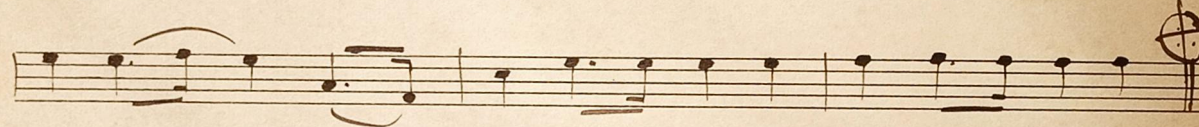


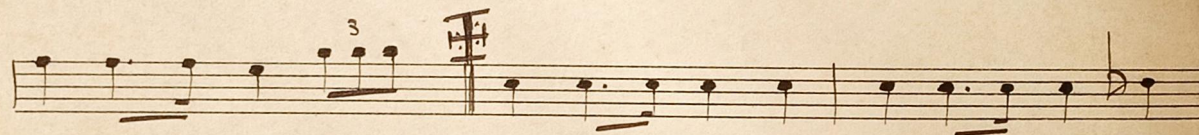


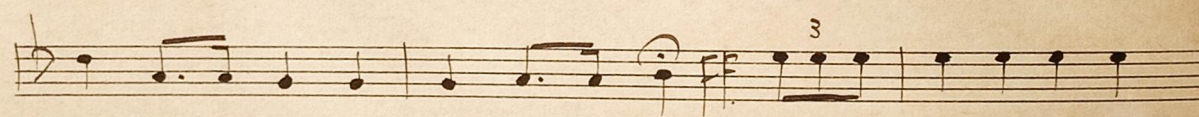


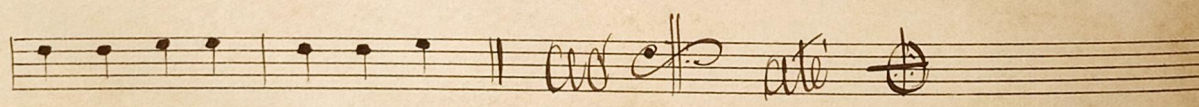












Handwritten musical notation on a single staff. It begins with a treble clef and a 2/4 time signature. The key signature changes from one flat (Bb) to two flats (Bb, Eb). The notation includes quarter notes, eighth notes, and a triplet of eighth notes. A red circled 'X' is written above the first measure.

Handwritten musical notation on a single staff. It contains a series of eighth notes. The word "cresc." is written below the staff, followed by a dashed line and the dynamic marking "ff." with a hairpin crescendo symbol.

Handwritten musical notation on a single staff. It features a 3/4 time signature and includes a triplet of eighth notes.

Handwritten musical notation on a single staff. It includes the text "Cio" and "citi" with a treble clef, and "depinis Salva." with a bass clef. There are also some handwritten symbols above the staff.

Handwritten musical notation on a single staff. It starts with a treble clef and a 2/4 time signature. The key signature changes to two flats (Bb, Eb). The notation includes quarter notes, eighth notes, and a dynamic marking of "ff.".

Handwritten musical notation on a single staff. It contains a series of eighth notes and quarter notes.

Handwritten musical notation on a single staff. It includes a triplet of eighth notes.

Handwritten musical notation on a single staff. It shows a treble clef and a key signature of two flats (Bb, Eb).

Four empty musical staves at the bottom of the page.